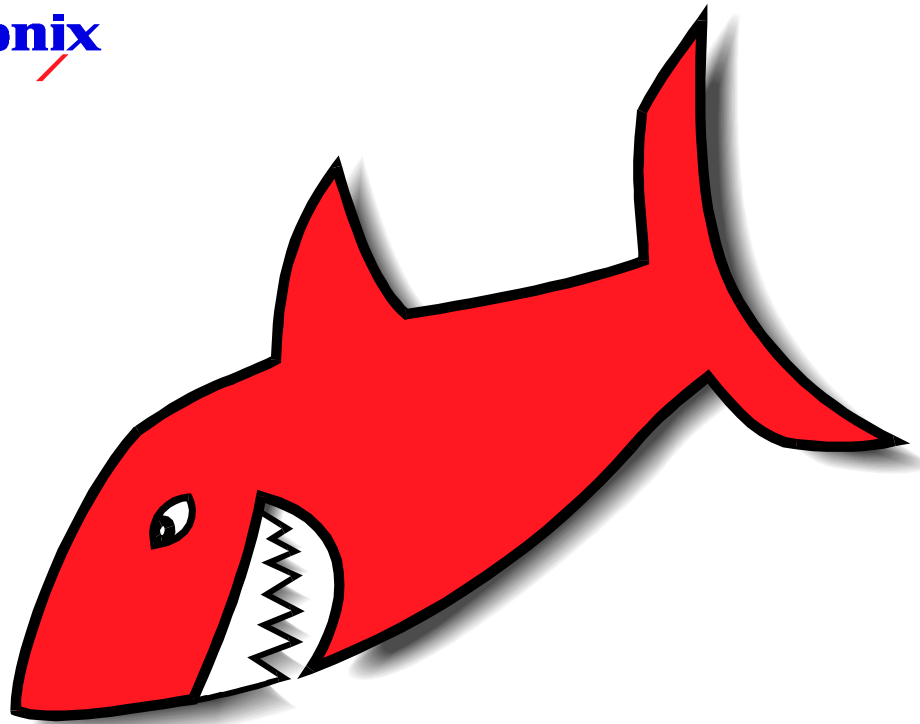


Tektronix



Lightworks

Product Support Bulletin 98/1
11th February 1998

Subject: New Windows NT 4.0
Reinstallation Procedure

Product Support Bulletin

Document Revision Status

Title: Product Support Bulletin 98/1

Revision: Rev. A 11/2/98

Document File Name: psb98_1.fm

Tektronix Part Number: N/A

Disclaimer

Tektronix U.K. Development Centre Limited accepts no liability for any consequential, incidental or indirect damages (including damages for loss of business profits, business interruption, loss of business information and the like) arising from any action or inaction based on information contained in this document. Tektronix U.K. Development Centre Limited reserves the right to vary the specifications of its products and/or to revise the documentation at any time without notice.

Copyright

Tektronix U.K. Development Centre Limited and its associated companies retain all ownership rights to its products' hardware, computer programs and documentation. Use of a Lightworks product is governed by the licence agreement supplied with the sale contract.

Introduction

The purpose of the Lightworks Product Support Bulletins is to help users make the most of their Lightworks products and to avoid potential problems. Product Support Bulletin 98/2 is aimed at all users of Lightworks products and may be freely distributed.

This Product Support Bulletin describes a new procedure for re-installing Windows NT 4.0 on a V.I.P 4500 system. This procedure should be used on all current V.I.P 4500 systems and replaces the procedure described in the current V.I.P 4500 Installation Manual (Revision 1.02 - Tek. Part # 070-9919-02).

Please make sure that you have the following disks before commencing a Windows NT rebuild:


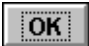

The V.I.P Boot Floppy (063-2849-01), the V.I.P software CD-ROM (119-5678-xx), the Windows NT 4.0 CD-ROM (either Microsoft Original OEM CD or Tektronix Licensed Upgrade CD) and the three Windows NT 4.0 setup floppies (119-5514-01).



Re-installing Windows NT 4.0


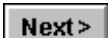
► **Installing Windows NT is a very complex task. Please follow the instructions carefully and allow about two hours to complete the process.**

► **It will only be necessary to re-install Windows NT if you have formatted the C:drive, or if the current installation is corrupt and you cannot repair it using the Emergency Repair Disk. In this case you should delete the C:\WINNT directory first by running the machine in DOS mode and typing DELTREE C:\WINNT <Enter> at the C: \> prompt.**





1. Before starting to install Windows NT, turn off the power, unplug the mouse from the console and plug it into the COM2 9-pin socket just above the Console socket on the back of the Main Crate. Note that if you have an earlier type of Main Crate (these systems were originally supplied with 4GB internal material disks), then you may need to use a short mouse adapter lead (supplied with these units) as the COM2 connector on the Main Crate may be a small 6-pin DIN socket rather than a standard 9-pin D-type.
2. Put the first Windows NT setup floppy (disk #1) into the floppy drive and turn on the ROMU and Main Crate.
- During the bootup you may get a “Diskette Drive A Error” message. If this happens, just press the <F1> key to resume bootup when prompted. The system will boot from the floppy and start to load some of the files needed for the upgrade.
3. You will soon be asked to put the second setup floppy (disk #2) in the drive. Do this and then press <Enter>.
4. After a while a screen will appear saying “Welcome to Setup”. At this point press <Enter> to continue.
5. The setup program will now search for the Adaptec controller card. Press <Enter> again to start this process.
6. When prompted, put the third Windows NT setup floppy (disk #3) into the floppy drive and press <Enter>.
7. After scanning the system the following controller should have been found:
Adaptec AHA-274X/AHA-284X/AI C-777X SCSI Adapter
8. Press <Enter> to accept this SCSI adapter
9. Now put the Windows NT 4.0 CD into the CD-ROM drive and press <Enter>.
10. Next, press <Page Down> seven times then press <F8> to accept all the terms of the Microsoft License Agreement.
11. A list of hardware and software components will now be displayed. Press <Enter> to accept the list displayed.
12. Now a list of disk partitions should now appear with **C: FAT (VI P4500)** highlighted. Press <Enter> to install Windows NT to this partition.

13. The next screen should be highlighted on:

DO NOT CHANGE THIS, just press <Enter>
14. Next, press <Enter> to select \WINNT as the location for the Windows NT files to be installed to.
15. Press <Enter> again. The system will check the C:drive for errors and then copy more files onto it.
16. Once the files have been copied you will be asked to remove the floppy disk and CD. Do this and then press <Enter>.
17. The machine will reboot automatically into “Windows NT Workstation 4.0”. Once booted, you will see a news ‘Windows NT Setup’ screen and a message to put the Windows NT CD-ROM back into the drive. Put the CD back into the ROMU and then click on the  button.
18. A box will then appear welcoming you to the ‘Windows NT Setup Wizard’. Click on the  button.

► **Note that if you do not have a mouse pointer, then the mouse may not be plugged in properly. However, don't panic! It is possible to continue the installation without a mouse and then install the mouse later. Follow the steps below but whenever they tell you to click on either  or  press <Enter> on the keyboard instead. To enter data into different fields, use the <Tab> key to move to the next field. Note also that some of the instructions below also give you an ‘<ALT>-key’ way to select menu items without using the mouse.**

19. When presented with the ‘Setup Options’ panel, leave ‘Typical’ selected and click on the  button.
20. You will now be asked for your name and organisation. Type in **VIP4500** as the name and **Lightworks** as the company and then click on the  button.

► **It is important that you use these names as the system expects to find them later on.**

21. You must now enter the 20 digit product ID “OEM” number which can be found on the “Certificate of Authenticity” supplied with the Windows NT Workstation 4.0 CD. Type in the three sets of digits and click on 
22. Next, type in the V.I.P system serial number into the ‘Computer Name’ field and click on  The serial number is on a sticker on the back of the Main Crate, starting with B110...
23. When you are asked to enter a password for the ‘administrator’ account, enter “**triton**” (all lower case) in both boxes and click on 
24. Leave the “create emergency repair disk option” set to “Yes” and click on 

25. Leave the next option set to “Install the most common components” and, once again, click on
26. The ‘Setup Wizard’ now appears again telling you that the network components will now be installed. Again, click on the button to continue.
27. The Windows NT networking panel now appears, asking how this computer should participate on a network. Select “Do not connect this computer to a network at this time” either by clicking on the button next to this option or by pressing <Alt>+<D> on the keyboard. Then click on
28. The Setup Wizard screen now appears one last time saying that Setup is almost finished. Click on
29. Check that the Date & Time and Time Zone are correctly set and then click on the button
30. The machine will now tell you that it has detected a “cirrus compatible display adapter”. Click on to accept this and then set the following display settings:
256 Colours
1024 by 768 pixels
small fonts
70 Hertz refresh frequency (see *Figure 1*)

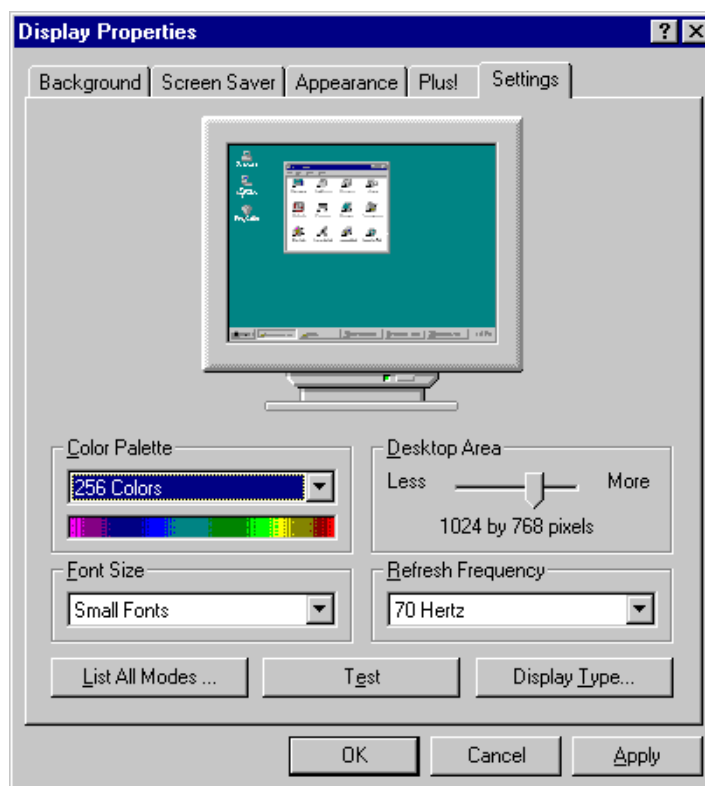

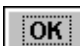
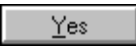





Figure 1 - Display Adapter Settings


31. Click on the  button, or press <Alt>+<E>, then click . You should see a 1024x768 test pattern.
32. Assuming that the test was ok, click on  or press <Alt>+<Y>, and then click on .
33. Click on  again to exit from the display settings.

The rest of the operating system files will now be copied.

34. Finally, configuration information will be saved and you will be asked to label a floppy disk: "Emergency Repair Disk". It is a good idea to also write today's date and the machine serial number (B110...) on it as well. Put this disk into the floppy drive and then click on .




The floppy disk will be formatted and then the repair information will be copied onto it.

Finally, temporary installation files will be removed and you will be asked to restart the machine again.

35. Remove the Emergency Repair Disk and click on the big  button.
- The basic Windows NT 4.0 setup is now complete and the machine will reboot with a menu offering Windows NT, Windows NT (VGA Mode) or DOS. Allow it to boot back into the default Windows NT and then proceed.

Copy Files From The CD-ROM to The C:drive

Once the basic installation of Windows NT 4.0 is complete and you have rebooted the machine, you will be asked to press <CTL><ALT> to logon. The next thing you have to do is copy all the additional files needed by the system onto the C:drive. Before you copy the files from the CD-ROM you should set the drive letter to Z: as shown below.

1. Press <CTL>+<ALT>+ when requested and then type **administrator** into the username field and **triton** (lower case) as the password. Leave the Windows NT CD in the drive for the time being.
2. Close the 'welcome' window which comes up and then run the Windows Disk Administrator from the start menu by clicking on the  button. Select 'Programs' → 'Administrative Tools' → 'Disk Administrator' from the menus and then click on its icon:  (Figure 3, page 9, shows how to start things from the start menu).
3. Click on  to accept any messages which come up and then you should see the Disk Administrator window appear (see Figure 2, below).

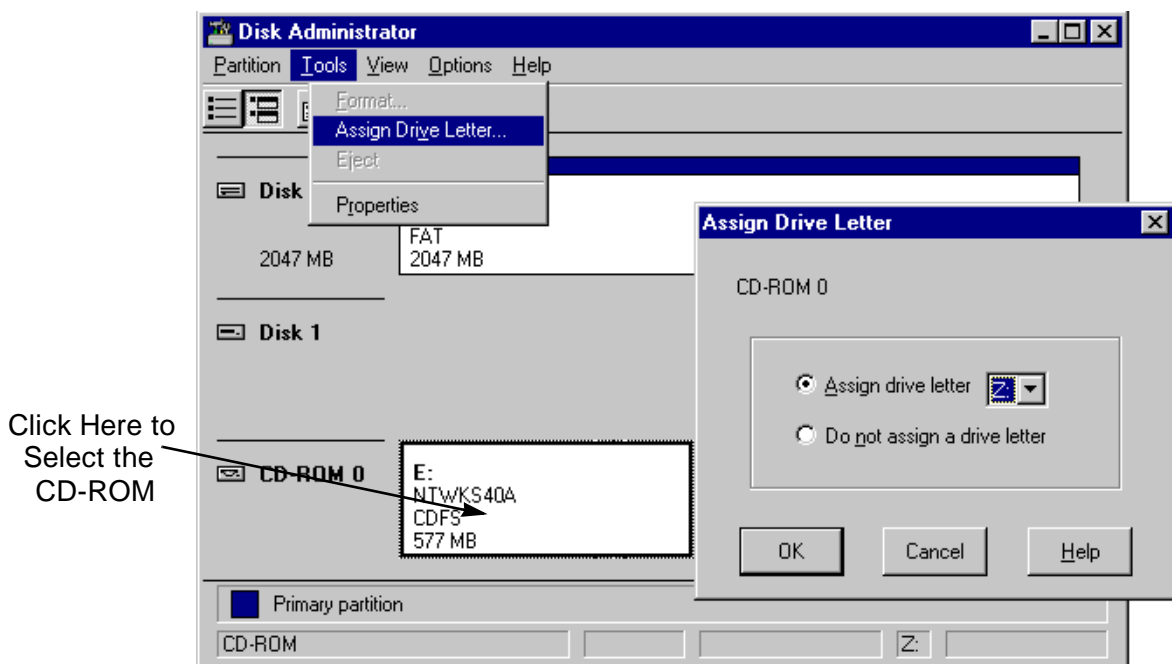

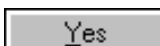



Figure 2 - The Windows NT Disk Administrator

4. Click on the area representing the CD-ROM drive and then select 'Assign Drive Letter' from the **Tools** menu. Set the letter to Z: for 'CD-ROM 0' as shown above and then click on  - Answer  to the question which appears.
5. Once the CD-ROM has been set to be the Z:drive you can exit from the Disk Administrator by clicking on the  button at the top right-hand corner of its window.

- Next you must copy some files from the CD-ROM drive onto the C:drive.

6. Start the Windows NT Explorer as shown below.

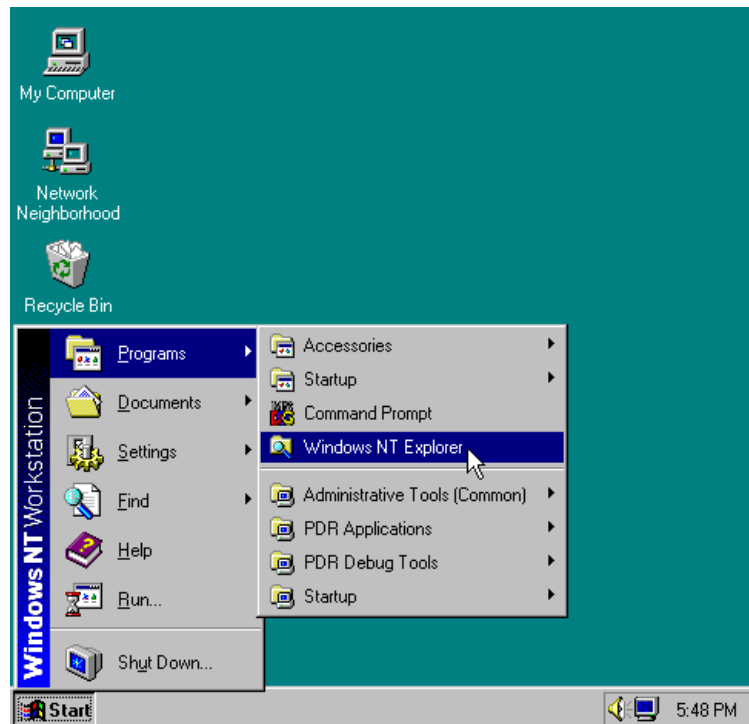


Figure 3 - Starting the Windows NT Explorer

7. You will then get a screen divided into two areas. The left-hand side of the Explorer lists the networks, computers, drives and directories, or folders, connected to the system; the right-hand side shows the sub-directories and files of the selected drive or folder as shown in *Figure 4*, below.

8. Double click on the 'Ntwks40a' icon (this is the Windows NT CD in the CD-ROM drive, or the Z:drive). The right-hand side of the Explorer will now give you a list of the folders on the Windows NT 4.0 CD-ROM.

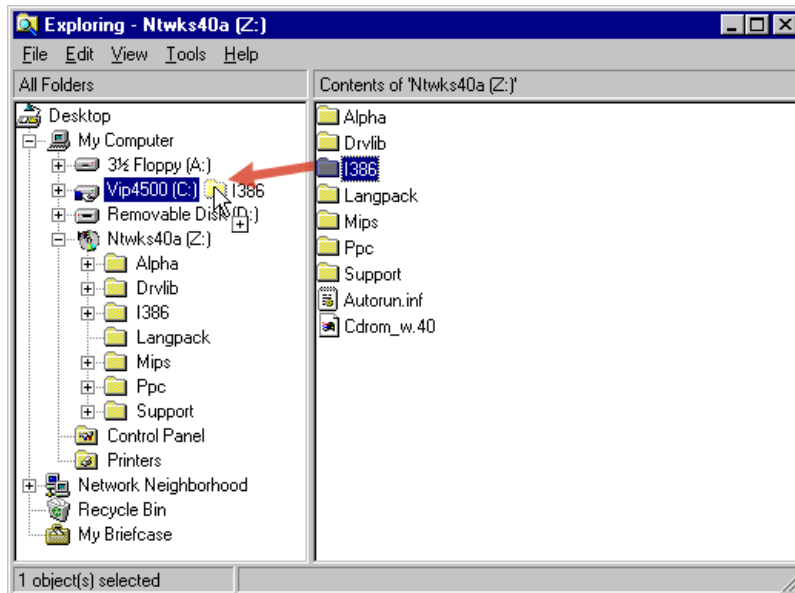


Figure 4 - Copying the i386 Folder to the C:drive

9. Drag the Z:\i386 folder over from the right hand side of the Explorer to 'Vip4500' (the C:drive) to copy it to the root of the C:drive.
 10. The entire i386 drive will now be copied from the Z:drive (the CD-ROM) to the C:drive.
- Having a copy of all the Windows NT source files (in the i386 folder) on the C:drive will make things a lot easier if you ever have to use the Emergency Repair Disk. You now need to copy some folders from the V.I.P software CD:
11. Eject the CD-ROM, take out the Windows NT CD and replace it with the V.I.P software CD.
 12. When the CD-ROM has spun up, double-click on its icon again and you will see a complete list of its contents on the right-hand side of the explorer window, as shown below.
 13. Select the 'Adaptec' folder on the CD and then drag it over to 'Vip4500 (C:)' to copy it to the C:drive.
 14. Next, copy the 'Drivers' folder to the C:drive
 15. Finally, copy the 'Software' folder across. These folders contain files which will be needed during the rest of the rebuild process.

► **You may be asked if you want to replace any existing files with ones copied from the CD-ROM, answer 'Yes to All' to this question.**

COPY FILES FROM THE CD-ROM TO THE C:DRIVE

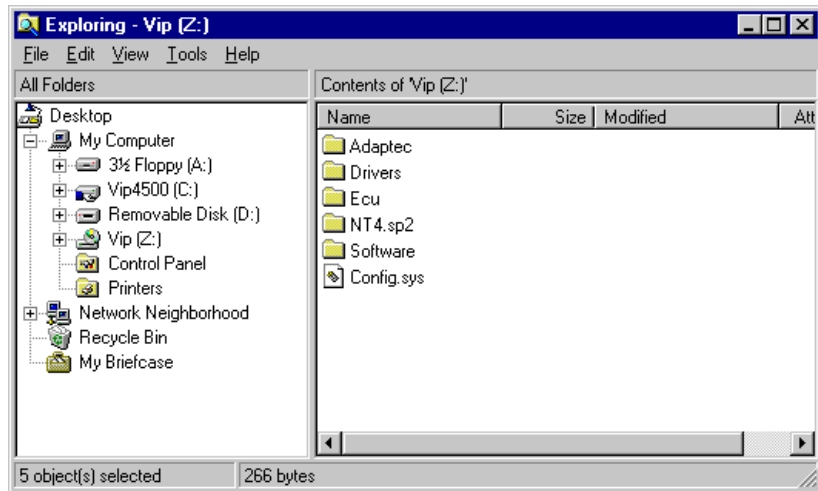




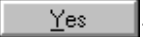


Figure 5 - Contents of The V.I.P CD-ROM

16. Once the copy is complete, check that the files have copied correctly and then remove the V.I.P CD-ROM.

Set up the Network Card and the ACL Serial Card

As you have just re-installed Windows NT without the network drivers, you must now set up the network card and the ACL (serial remote control) card.

- First put the Windows NT CD back into the CD-ROM drive. If a big picture of the CD suddenly appears on the screen, close it by clicking on its  button. Now follow these steps:
 1. From the  menu, run the Control Panel by choosing 'Settings' → 'Control Panel'  and then click on the Network icon: 
 2. You will get a message saying "Windows NT Networking is not installed. Install it now?". Click on .
- The 'Network Setup Wizard' now starts up. After examining your V.I.P system with a magnifying glass, it will ask how the computer should participate on a network:

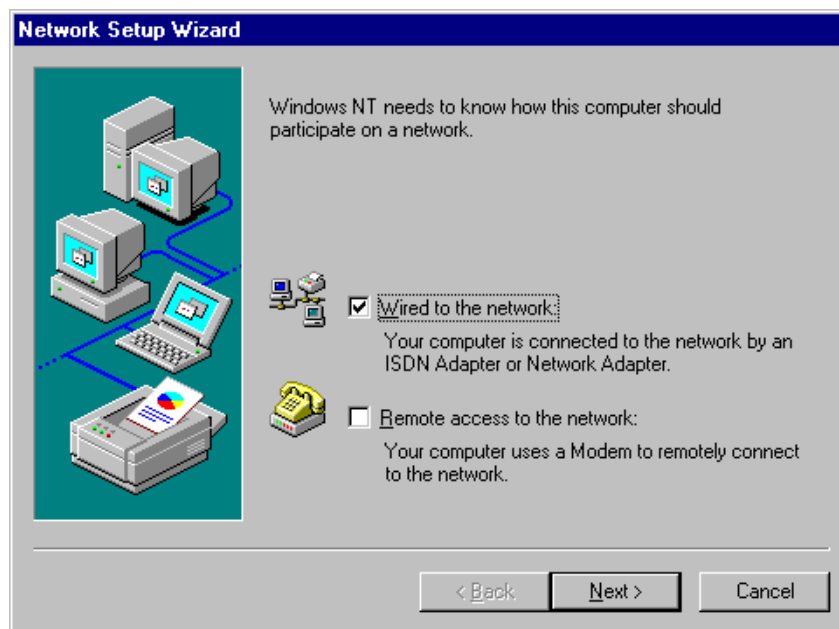





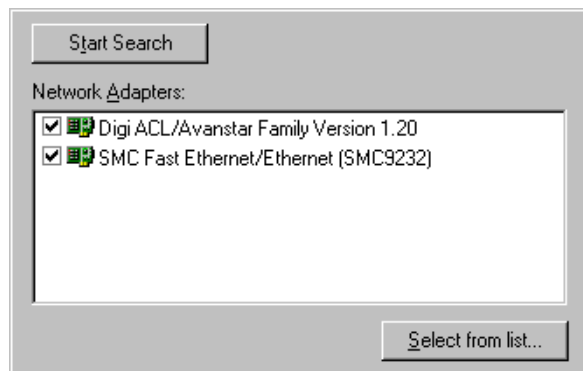



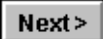
Figure 6 - The Network Setup Wizard

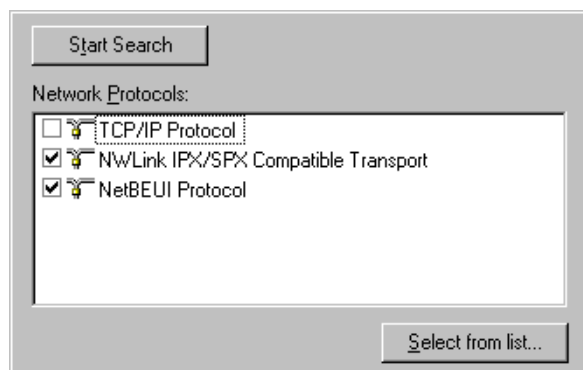
3. Leave the wizard set to 'Wired to the network' and click on 
4. In the next window, click on the button which says 'Select From List...'
5. A list of standard network adapters appears, but the adapter used in the V.I.P Main Crate is not on this list so you have to add it by clicking on the 'Have Disk...' button.
6. Type the path: **C:\DRIVERS\SMC** in place of 'A:\' into the box which appears and then click on 
7. Click on  again to select the 'SMC Fast Ethernet/Ethernet (SMC9232)' OEM option.


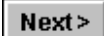
SET UP THE NETWORK CARD AND THE ACL SERIAL CARD

8. The list of network adapters will appear again showing just the SMC card. Click on the 'Select From List...' button again.
9. As before, you have to add a non-listed device driver so click on the 'Have Disk...' button.
10. This time, type the path **C:\DRIVERS\STARGATE** into the box which appears and click on .
11. Select the 'Digi ACL/Avanstar Family Version 1.20' driver by clicking on the  button
12. You should now see the two cards listed by the 'Wizard' as shown below:



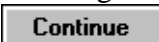


13. Click on the Network Setup Wizard's  button to continue.
14. In the next window you are asked to choose the protocols you will be using. For now, *deselect* 'TCP/IP' and select 'NWLink IPX/SPX' and 'NetBEUI' as shown below. Note that you may need to change these later if you connect the machine to a network running different protocols. Please consult your network administrator when you want to use your V.I.P system on a network. Click on  to continue.



15. A list of 'Network Services' will now be shown - click on  to select all these services, then click on  again to start the network installation.

SET UP THE NETWORK CARD AND THE ACL SERIAL CARD

16. You will now be asked where the Windows NT Network files are to be loaded from - type 'Z:\i386' into the box and click on 
17. When the SMC Fast Ethernet Adapter window appears, check that the Network Line Speed is set to 10Mb/s and then click on 
18. Now you will be asked where the files for the Stargate driver are. Leave the path set to C:\DRIVERS\STARGATE\ and click on 
19. The network driver files will now be copied into the operating system folder.
20. After a few moments the Digi ACL/Avanstar Family Adapter setup window will appear as shown in *Figure 6*, below. Select 'ACL II+' as the board type from the drop-down list and then set the following:

I/O Base Address: **0x200**
IRQ Level: **15**
Dual Port Address: **0xC8000**
Dual Port Size(Kb): **16**
Number Of Ports: **8**

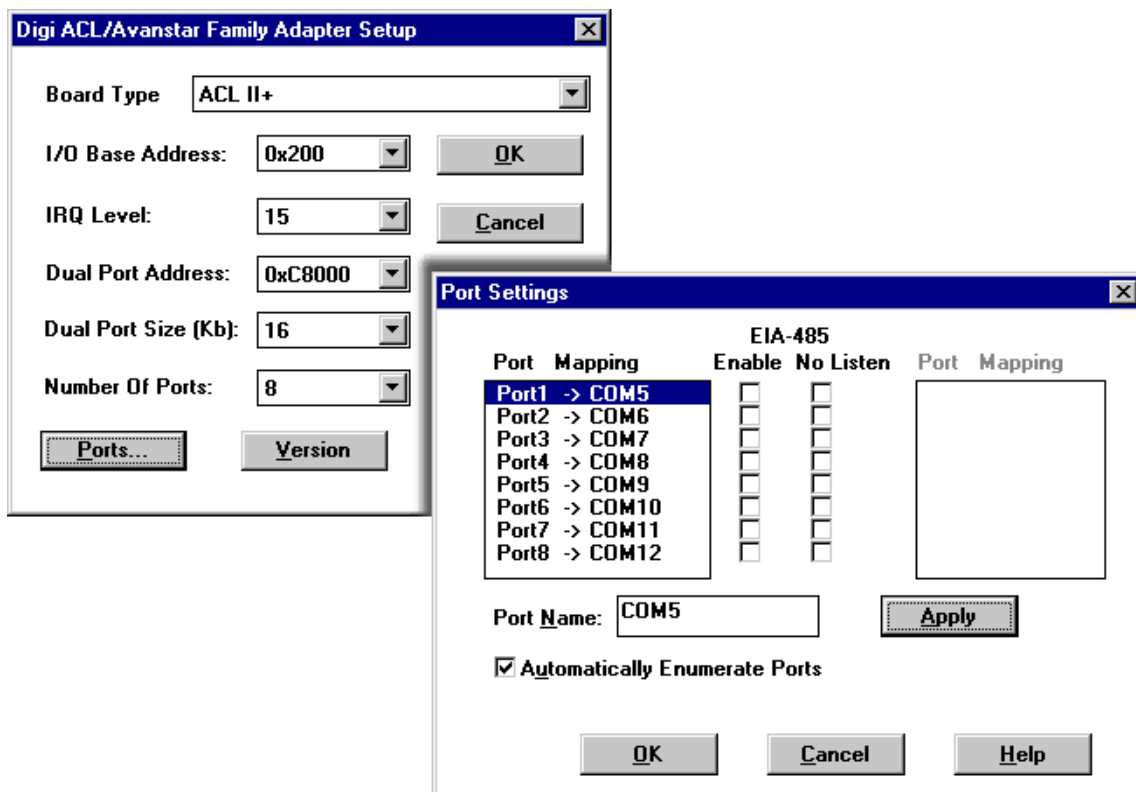






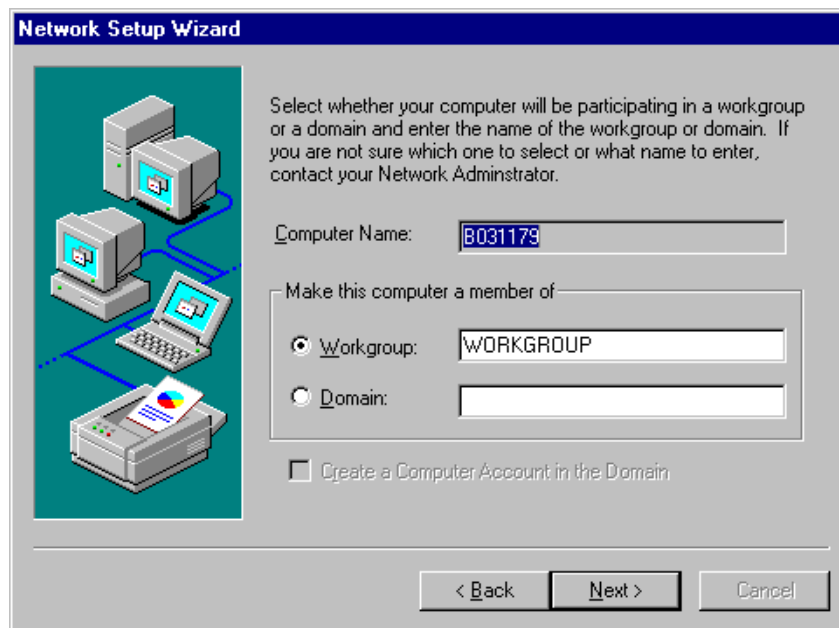



Figure 7 - ACL Card Setup and Port Configuration

21. Now click on the  button and highlight the first port ('Port1').

SET UP THE NETWORK CARD AND THE ACL SERIAL CARD

22. Type **COM5** into the 'Port Name' box and tick the 'Automatically Enumerate Ports' box as shown.
23. Click on the  button and the 'Port Mappings' should now go from COM5 to COM12 as shown above.
24. Click on  to return to the main ACL Settings panel and then  again to finish the card installation.
25. The rest of the files will now be copied and you will see the Network Setup Wizard again. Click on  to show bindings for 'all services'.
26. Finally, click on  again to start the network running.
27. The Wizard will appear again, asking you whether the computer will be participating in a workgroup or a domain. Simply click on  to accept the default 'WORKGROUP' as shown.



28. Finally, click on the  button. You will be asked if you want to restart the computer now. Answer 'Yes' and allow the machine to reboot back into Windows NT.

► **Note that although you have now installed the Windows NT network, you may have to set up a Windows NT domain and certain user access privileges before you can actually log on to a network. Please consult your network administrator for further information.**

Installing The Windows NT Service Pack

- ▶ Please note that the V.I.P system is currently designed to run with a specific service pack installed. Do not install any later service packs unless this is part of a future V.I.P software upgrade.
- The final part of the Windows NT installation is to install service Pack 2 which fixes a few minor bugs in the operating system. This software is included on the V.I.P Software CD-ROM (119-5678-xx). Before you start the installation, please make sure that you are logged on as **administrator**.
 1. Put the Lightworks V.I.P Software CD-ROM into the drive.
 2. Run the Windows NT Explorer as shown in *Figure 3*, above, and double click on the CD-ROM drive (Z:) to list its contents.
 3. Now double click on the 'NT4.sp2' folder and find the file called 'update.exe' as shown below:

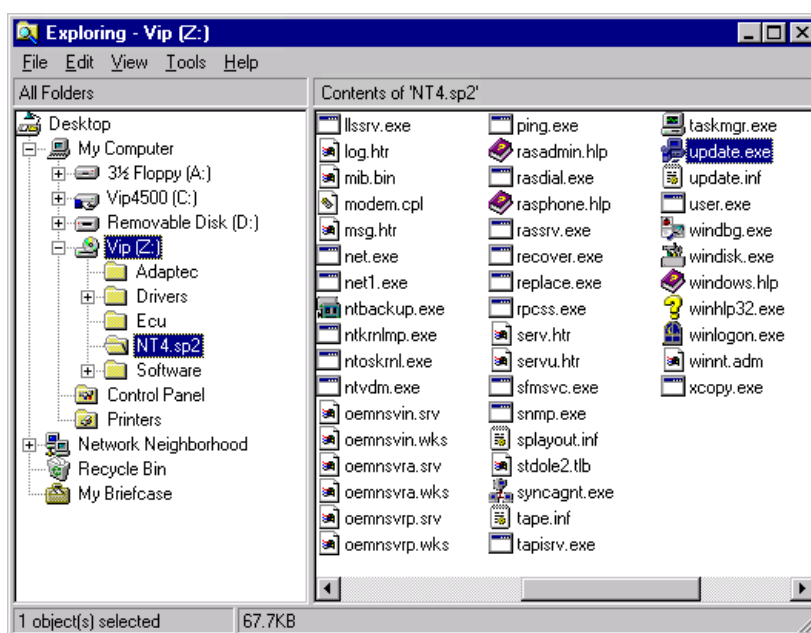



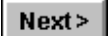




Figure 8 - Starting the Service Pack Installation

4. Double click on it's  icon to start the installation.
5. You will now see a box saying "Welcome to Service Pack Setup". - Click on the  button.
6. Another box will appear giving you the option to install or uninstall a service pack. Select the default 'Install the Service Pack' and click on .
7. In the next box select 'Yes, I want to create an Uninstall directory' and click on .

INSTALLING THE WINDOWS NT SERVICE PACK

8. Finally, click on  to install the update.
 9. The install program will check the system and then copy files onto the C:drive.
 10. Once the files have been copied click on  to restart the machine.
- Note that when the machine reboots, you can see that the service pack is installed because during the Windows NT bootup, a message appears at the top of the blue text screen saying:

Microsoft (R) Windows NT (TM) Version 4.0 (Build 1381: Service Pack 2)