

INTERLAB

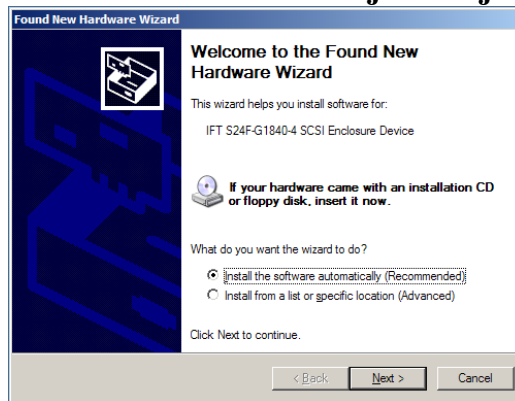
Tel: +331 3971 7337 – Fax: +331 3928 9008

ISSUE: Windows keep asking for IFT driver

Concerned platforms: any Windows

Vernouillet, 27.09.2010

Issue : After deployment of Infortrend SAN storage, Windows keep requesting “IFT S24F-G1840-4 SCSI Enclosure Device” while device works normally. This window keep appearing at each machine start. This issue is not major but just disturbing



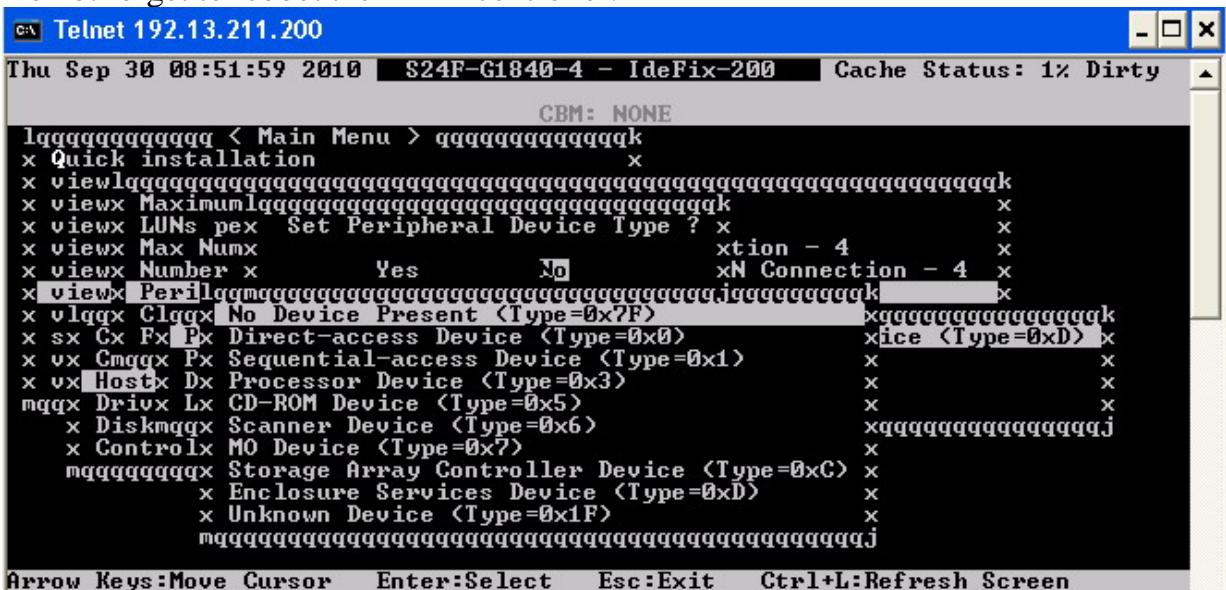
Do not search for drivers to feed win\$uchs with the Firmware of you Infortrend bay can handle this, open a telnet session and go to:

- view and Edit Configuration Parameters"--->"Host-side parameters"-->"Peripheral device Type Parameters".

Change it so reads as below rather than enclosure device:

Peripheral device Type -No device present

- say **YES** to this one for the no device present
- Do not forget to reboot the RAID controller.



Pls. send us your feel back. Rev.1 – David 30.09.2010

INTERLAB, 5 rue Jacques Grévin, 78540 Vernouillet, France – Tel: +33 1 3971 7337 – Fax: +33 1 3928 9008
Email: Sales@Interlab-net.com - Vat Id: FR-12.330.255.415 – Siret: 330.255.415.00011