

INTERLAB

Tel: +331 3971 7337 – Fax: +331 3928 9008

ISSUE: Use ShuttlePro with Lightworks

Concerned platforms:
LIGHTWORKS V10

Vernouillet, 1.12.2011

ISSUE & SITUATION:

After installation of LightWorks application you wish to use your ShuttlePro small console. Even if we recommend the USB Lightworks console, ShuttlePro console is perfect for Laptop use, and due to its size it is a good companion for field editing.

We suppose that ShuttlePro console drivers are installed and running.

General considerations:

Principle of work: the ShuttlePro control is made in two levels; Lightworks software needs a key mapping corresponding to editing commands, then shuttlePro needs to map those commands to specific keys on the console. Example; on Lightworks you map “**shift+p**” as Play forward function, then in ShuttlePro prefs you need to map “**shift+p**” to the physical key on the console.

Those informations are passed via **ntcardvt.exe**.

Depending if you run LW in Win7 or XP ntcartvt and prefs locations may be different. Use the search function to locate the LW two key locations.

Under XP:

ntcardvt location is: E:\Program Files\Lightworks\Lightworks

prefs location is: E:\Documents and Settings\All Users\Documents\Lightworks\Preferences

Step by step:

1.

Get Lightworks and ShuttlePRO prefs, examples can be downloaded at:

http://www.interlab-net.com/docs/lightworks/software/Lightworks_2010/ShuttlePro_drv&Prfs/

(You need to be registered to access these files)

Note that Shuttle prefs file will not works for Shuttle PRO 2.

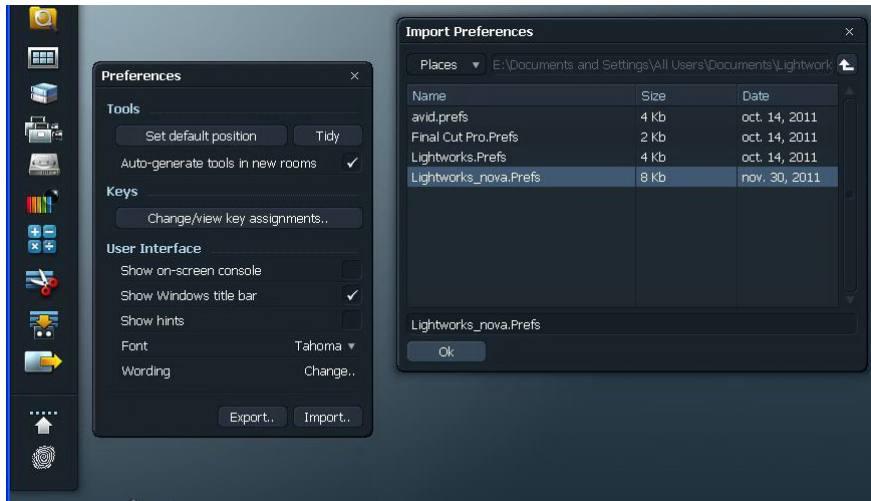
Alternatively, you can build your Prefs your self.

INTERLAB

Tel: +331 3971 7337 – Fax: +331 3928 9008

2.

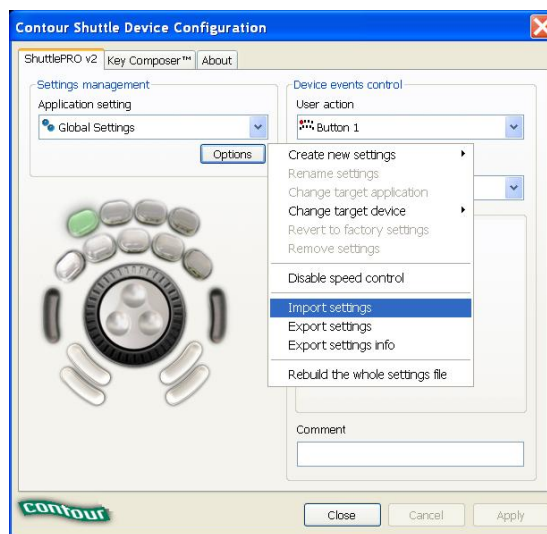
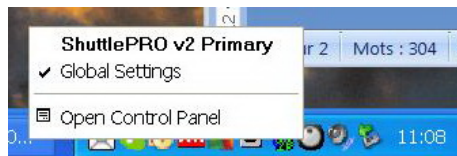
Import “Lightworks_Prefs_for_shuttlePro2.Prefs” inside of Lighworks application.



3.

Import “Contour_SPro_layout_for_Lightworks.Pref” inside of ShuttlePro driver.

- Open ShuttlePro control panel
- Import prefs file

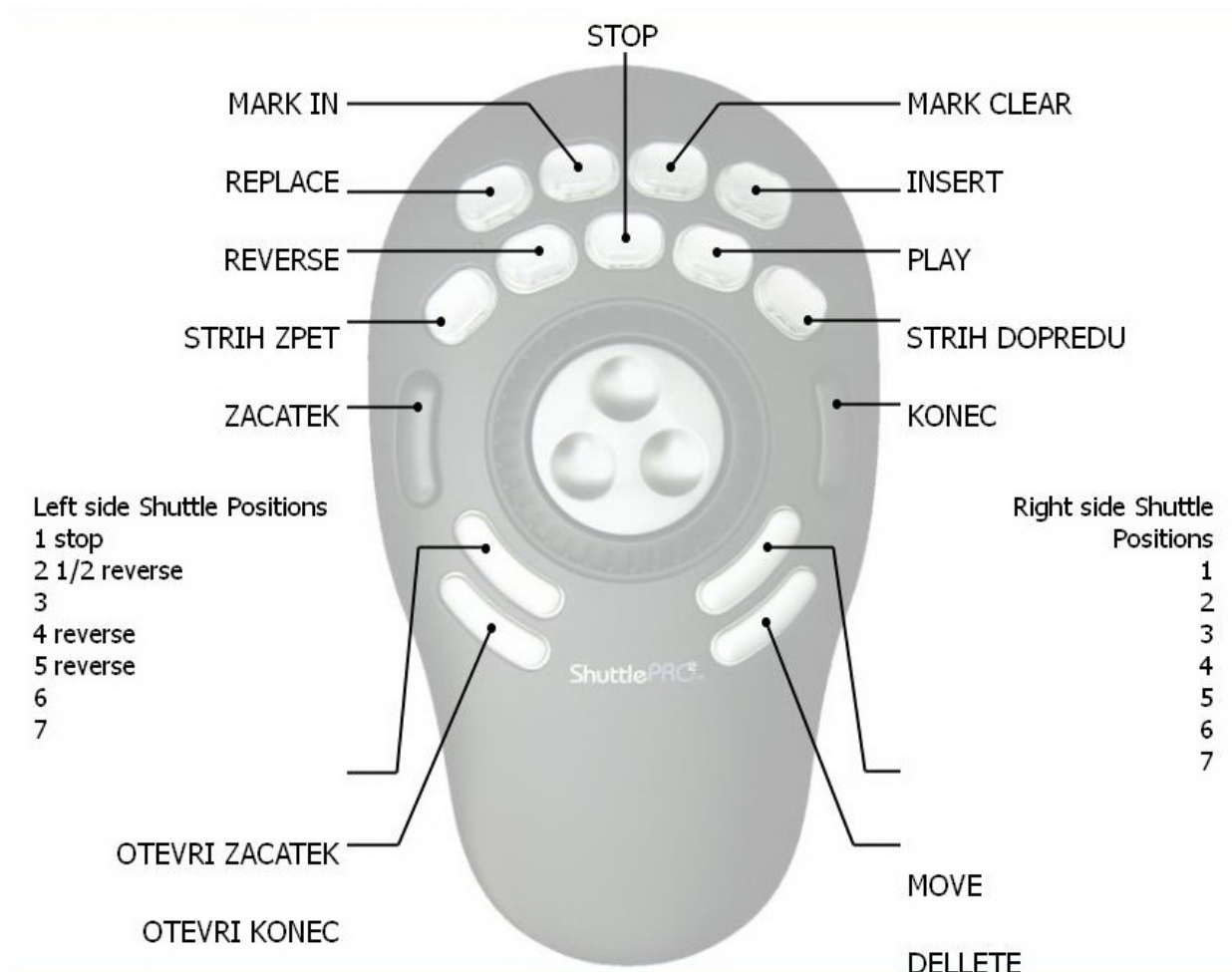


INTERLAB

Tel: +331 3971 7337 - Fax: +331 3928 9008

4.

At this stage your console layout should look like this:



Pls. send us your feel back.

Rev.2 – David 10.11.06 / updated 01.12.11