

INTERLAB

Tel: +331 3971 7337 – Fax: +331 3928 9008

ISSUE: Softworks Installation procedure

OS : WINDOWS XP

Vernouillet, 07.1.08

Requirement:

Fast PC, 1GB Ram (2GB recommended), 200MB disk space, WinXP pro SP2.

Procedure:

1.

Download the required packages made of Softworks dependencies, Matrox SW Codec and Softworks/Alacritry software.

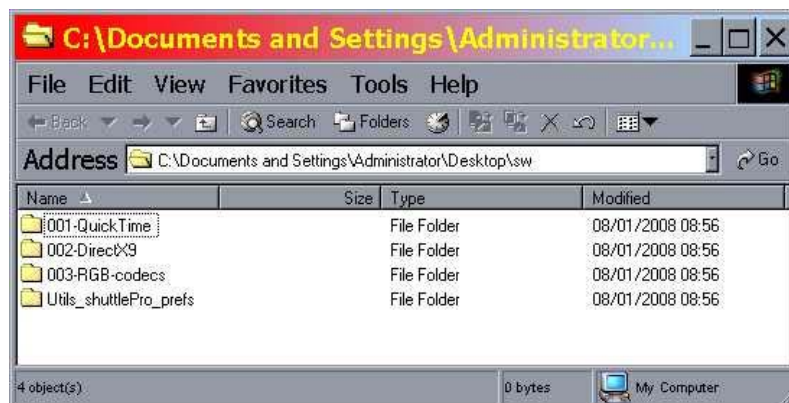
Softworks_dependencies.zip
DSX.VFWSoftwareCodecs_4.0_SP1.zip
SetupRC3.exe

2.

Create a restoration point on your system.

3.

Un-Zip the “Softworks_dependencies.zip” not by Drag & Drop but by using the “Extract” feature on WinZip, there is a directory structure to keep, and it looks like this:



INTERLAB

Tel: +331 3971 7337 – Fax: +331 3928 9008

4.

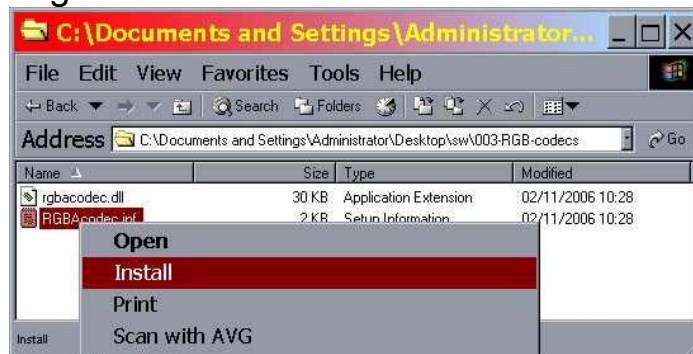
Then, install in the given order:

a/ Softworks_dependencies.zip packages

QuickTime: follow installer directives

DirectX: follow installer directives

RGB codecs: right click on INF extension and install

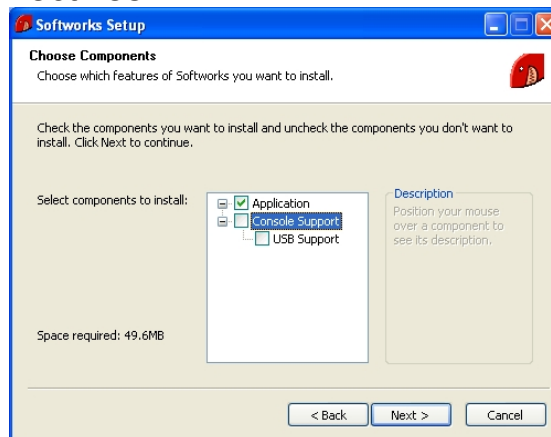


b/ DSX.VFWSoftwareCodecs_4.0_SP1.zip

Follow installer directives

c/ install softworks/alacrity SetupXXX.exe.

Follow installer directives



If you do not have an USB Lightworks console, **DO NOT CHECK CONSOLE SUPPORT**

- reboot

INTERLAB

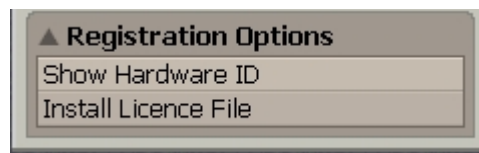
Tel: +331 3971 7337 – Fax: +331 3928 9008

5. Run the Softworks application

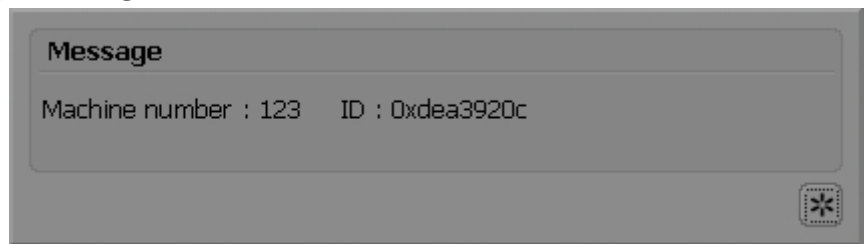


Go to the “MACHINE ROOM”

At the end of the menu, you will see, SHOW HARDWARE ID and INSTALL LICENSE.



Highlight “SHOW MACHINE ID”




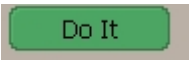
And send us, this number “ID : 0xde3920c” together with your personal details; name, address, email and phone number. We will release you a temp license for evaluation.

INTERLAB

Tel: +331 3971 7337 – Fax: +331 3928 9008

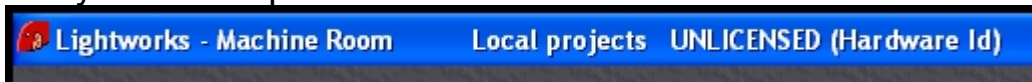
6. LICENSE INSTALLATION

a.

Copy you XXXXXX.LIC file on desktop, launch Softworks, to machine room, look for , open the related browser, find the XXXXX.LIC file, validate  and restart the application.

b.

Then at restart the Softworks apps should say in the upper left corner “EVALUATION with the number of days remaining” if it says “un-licensed” the LIC is not valid or you have a problem.



Technical note:

LIC is rendered based on networks MAC address, in some cases especially on laptop, depending on state the networks is set, the MAC address may change and LIC is not working. Try to put the Laptop in the conditions in witch LIC ID was generated or contact our support.

Pls. send us your feel back.
Rev.1.1 – David