

INTERLAB

Tel: +331 3971 7337 – Fax: +331 3928 9008

ISSUE: MetaSan V2. DYNAMIC Drives

Concerned platforms:

TOUCH, MR, any Windows XP or W2k

Vernouillet, 09.01.2006

Issue : Dynamic drives connecting disconnecting and global reliability issue.

Generally a lot of SAN softwares have troubles with dynamic partitions, this is not only MetaSan issue, ImageSan and SanErgy have the same troubles.

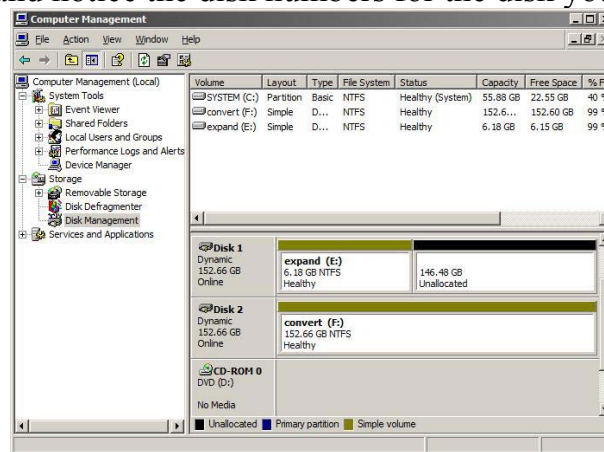
This describes how to get back from dynamic to basic partition without having to loose your partion content. This supposes serveral conditions:

Drives must be regular partitions, no STRIPE no SPAN. If you have STRIPPED VOLUMES you need to break them.

Attention; *these actions are CRITICAL you need to backup your datas and eventually be ready to loose disk content is things goes wrong.*

Here are the steps:

1. Start Disk Manager and notice the disk numbers for the disk you want to convert.



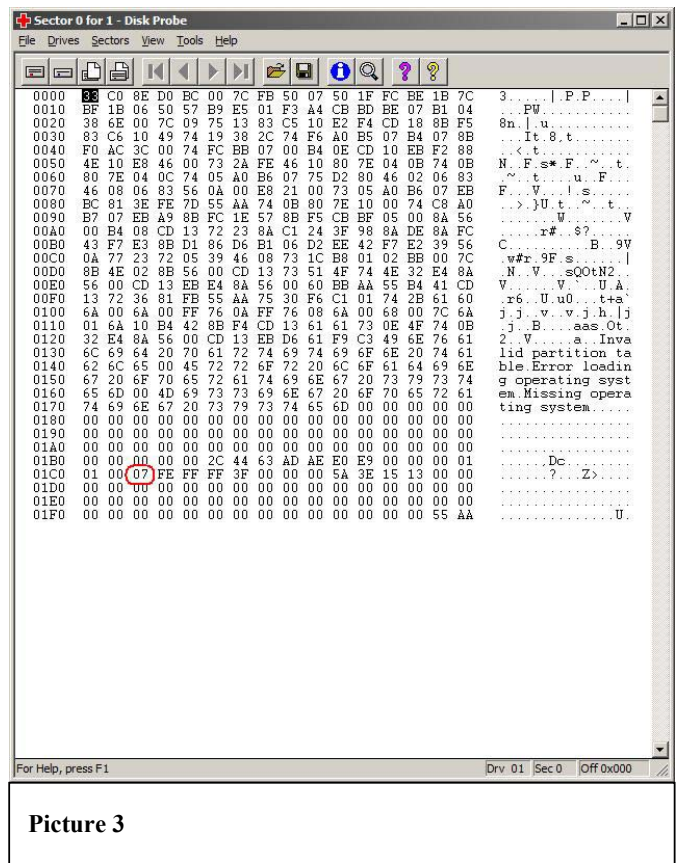
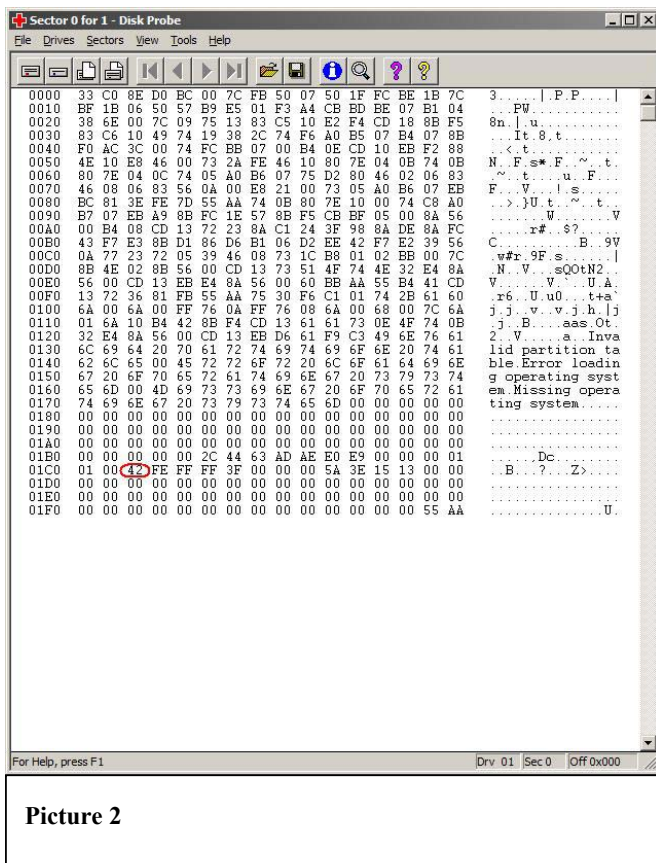
Picture 1

INTERLAB

Tel: +331 3971 7337 – Fax: +331 3928 9008

In this example, the disks are disk 1 and disk 2. Two volumes need to be converted, one takes just part of the first disk named "expand". The other take the entire disk and is named "convert".

2. Close Disk Manager and run DISKPROBE.exe
3. From the Drives menu, choose Physical Drive
4. In the dialog, double-click the physical drive you want to convert. It will disappear from the dialog.
5. Clear the Read Only check box and click Set Active. Then click OK to close the dialog.
6. From the Sectors menu, choose Read (starting sector 0, number of sectors 1)
7. **See screenshot 002.** The value you need to change is in the red circle. You need to replace **42** with **07**. (screenshot 003)

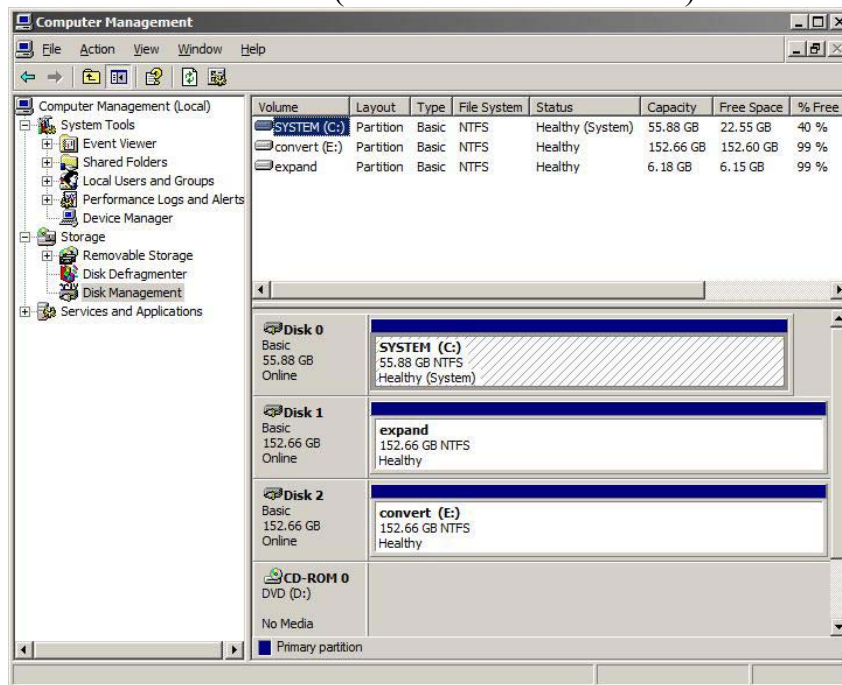


INTERLAB

Tel: +331 3971 7337 – Fax: +331 3928 9008

8. From the Sectors menu, choose Write. In the dialog, click Write it. Confirm that you want to overwrite data.
9. Go back to Drives, choose Physical Drive and click Close Handle.
10. Choose the second Physical Disk you want to open as described in step 4 and 5.
11. Repeat steps 6-9 for the second drive.

An illustration of what happened with my drives is picture 004. As you can see, now volume "expand" takes the entire disk (152 GB instead of 6 GB).



Picture 4

Note: DiskProb has a bugg you need to confirm twice the drive selection. Any other disk editors can be used, but this one was able to handle filesystems of 2TB, while other gave up...

Thank you Mr Veselin Batzarov for your help.

Pls. send us your feel back.
Rev.0 – David 09.01.06