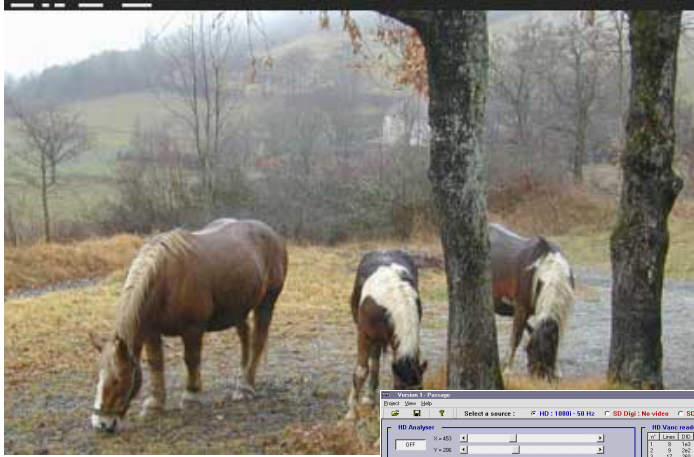


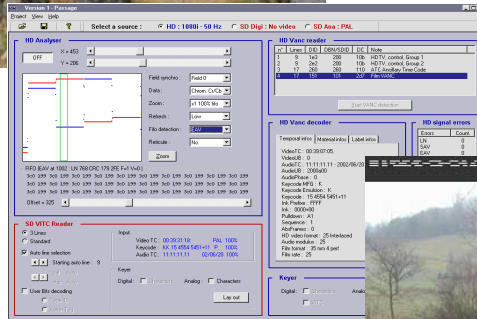
Aaton Passage

The link between HD and SD in the post-telecine world

HD w/. Vanc



Passage controls and complements the creation of SD tapes from field or telecine acquired HDTV masters.



SD w/. Vitc + Char



A multi-purpose station for HD, SDI, and Analog metadata transit

Passage is a HDTV analyser and RP188 VANC reader. It inserts VITC+characters in the SDI and Analog channels out of the built-in broadcast quality SD downconverter of D5 and HD-Cam VTRs.

It also works as an SD post-burner which –from the SDI VITC– inserts VITC + characters in SDI and Analog channels.

HDTV signal analyser

A sophisticated HDTV analyser, Passage is a peace of mind for the facility engineer who can verify the value of any pixel in the HDTV signal.

HD Vanc reader

VANC lines are detected, metadata is extracted, displayed and printed.

HD Vanc to SD Vitc+Character keyer

Film (Keycode & AudioTC) and *Video* VANC are keyed as characters into the HD 1080p/24sf channel, and keyed as VITC + characters into the SDI and Analog downconverted channels.

SD Vitc to Vitc + Character keyer

SDI 3lineVITC is read, rejuvenated and keyed as VITC + characters into the SDI and Analog channels.

After-the-fact list generator

The HD Vanc and SD 3lineVitc containing the videoTC, keycode and audioTC are sorted to generate FLX, ATN, ALE transfer lists (option).

Hardware: Passage runs either as a standalone station in a PC w/. Aaton HD & SD keyer boards, or in an HD equipped Keylink-IP, or, as an SD post-keyer only, in a PC w/. an Aaton ADX board.

France +33 4 7642 9550
post-support@aaton.com

AATON[®]