

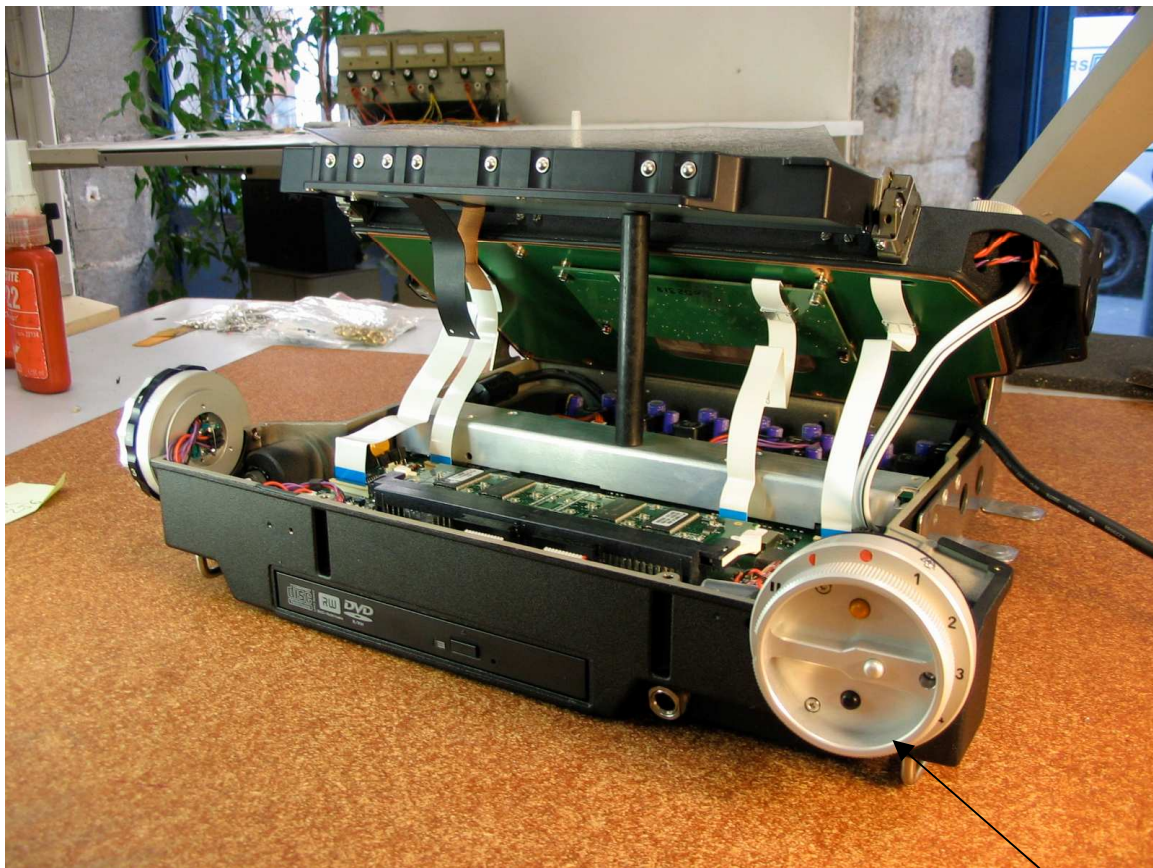
How to replace the main selector

Tools :

- a flat screwdriver
- a BTR 2 mm screwdriver (for a 2,5 mm screw).
- a BTR 1,5 mm screwdriver (for a 2 mm screw).

Procedures :

- Unscrew the 2 small screws of protection of the flat cable under the swivelling front panel.
- Then unscrew the 6 screws which fixes the head of Cantar : 2 under the front panel, 2 on the sides, and 2 behind (under the analog input connectors) (be careful with the different lengths)
- Unscrew and remove the rear housing of the internal hard disk.
- Raise the head of Cantar delicately (in order not to "tear off" the flat cables) and to put it on the back of Cantar, as on the following photo.



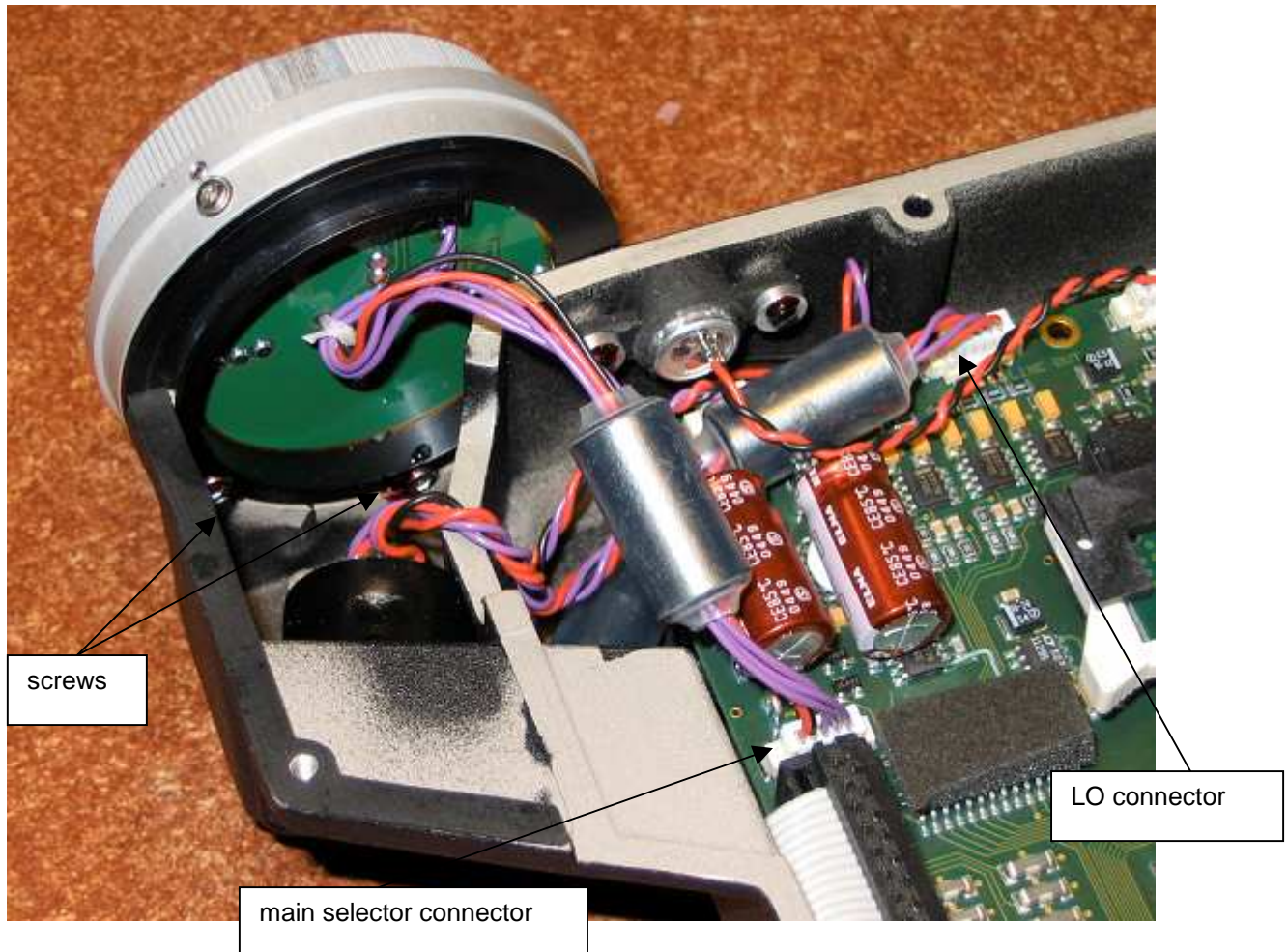
main selector

Warning : if the repair is not performed by an authorized service center, it is done under the owner's responsibility, at his own risks. Parts damaged will have to be replaced at full cost.

- Unscrew the 2 screws that maintain the line out socket.



- Disconnect the line out connector and the main selector connector.
- Unscrew the 2 screws that maintain the main selector using the line out socket whole.



- Remove the new main selector.
 - Remove the line out socket.
 - Reconnect the line out and selector connectors.
-
- Reinstall the head in the right position.
 - Screw up the head (the 2 longest screws go on the rear side), and the flat cable protector under the front panel.
 - Reinstall the internal hard drive housing.

Warning : if the repair is not performed by an authorized service center, it is done under the owner's responsibility, at his own risks. Parts damaged will have to be replaced at full cost.